

# Biodiversity Action Plan

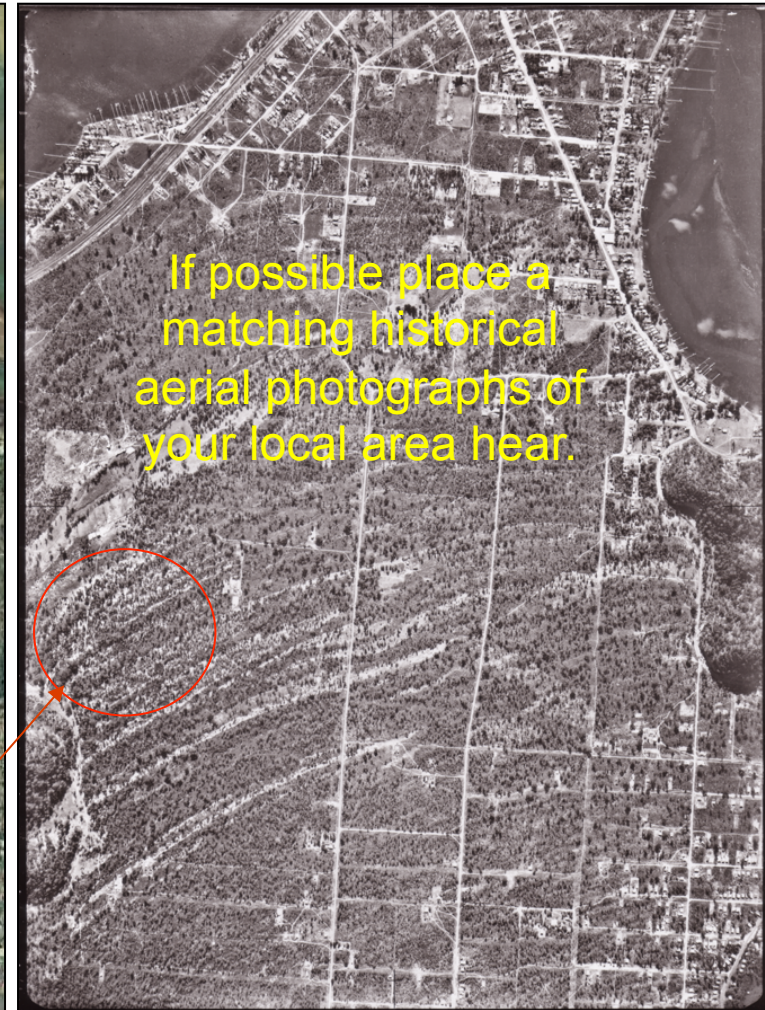


# Now & then

Loss of biodiversity often results from urban development. What changes have taken place in your local area?

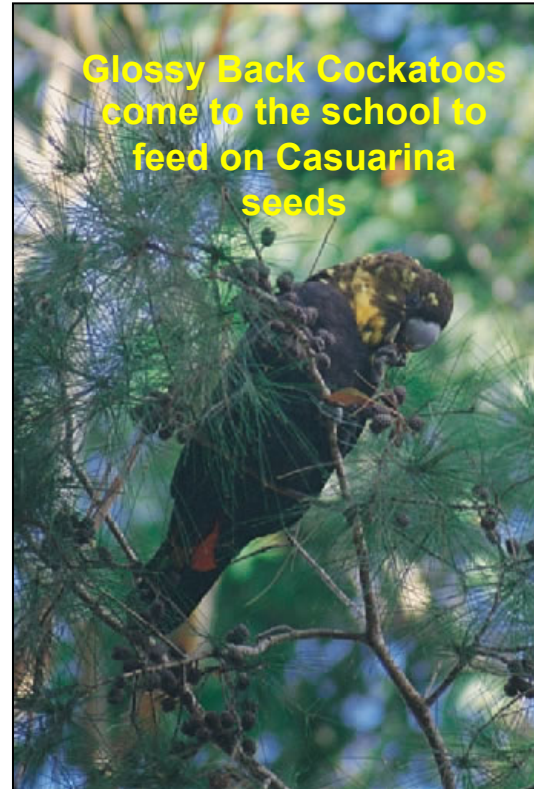


Recent Air Photograph from Google Earth



1941 Air Photograph

# Some of our threatened species



In NSW, there are more than 1000 native species, populations and ecological communities threatened with extinction.

Do you have any in your area?

Put their photos here

Go to:

[www.threatenedspecies.environment.nsw.gov.au](http://www.threatenedspecies.environment.nsw.gov.au)



# Umina Campus

Biodiversity  
Survey 201?

Label the gardens survey in your  
school and reference on the  
Habitat Assessment Recording  
Sheet



Using Google Earth replace the  
this photo with one of your  
school or use a school map.



## Site 1

### Assessment:

This remnant Woodland is in good condition.

### Threats:

- Weeds from neighbouring properties
- Informal tracks and trampling
- Slashing/underscrubbing
- Rubbish dumping
- Groundwater extraction

### Solutions:

- Signs to raise awareness
- Weeding by local Landcare group and accredited students
- Investigate groundwater use

## Site 2

**Assessment:**

**Threats:**

**Solutions:**

Place a photograph here

## Site 3

**Assessment:**

**Threats:**

**Solutions:**

Place a photograph here

## Site 4

**Assessment:**

**Threats:**

**Solutions:**

Place a photograph here



# Biodiversity Action Plan

**Area 1:** Plant more understory

**Area 2:** Plan a walkway and landscape the garden area

**Area 3:** Place some nest boxes in the tall trees

**Area 4:** Plant more flowering plants

**Area 5:** weed removal

Replace these actions with you own

